

Legend

● Proposed Development

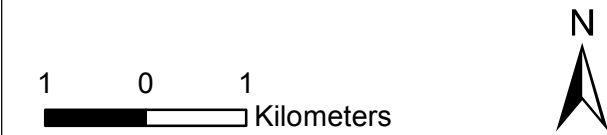
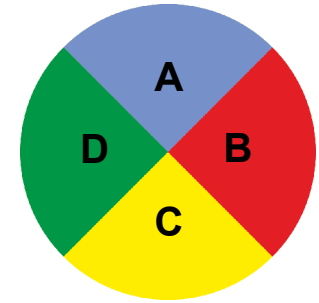
Cumulative Turbines

● Operational

● Consented

● In Planning

View Cone and Wireline Reference



0	23/05/2019	For Issue	GM	RB
Rev.	Rev. Date	Drawing Status	Drawn	Appr'd

SWECO 
Sweco, Grove House, Mansion Gate Drive, Leeds, LS7 4DN
Tel: +44 (0) 131 262 0000

Prepared by:

RAMBOLL
Ramboll UK Limited

Client

Pencloe Wind Energy Limited

Project

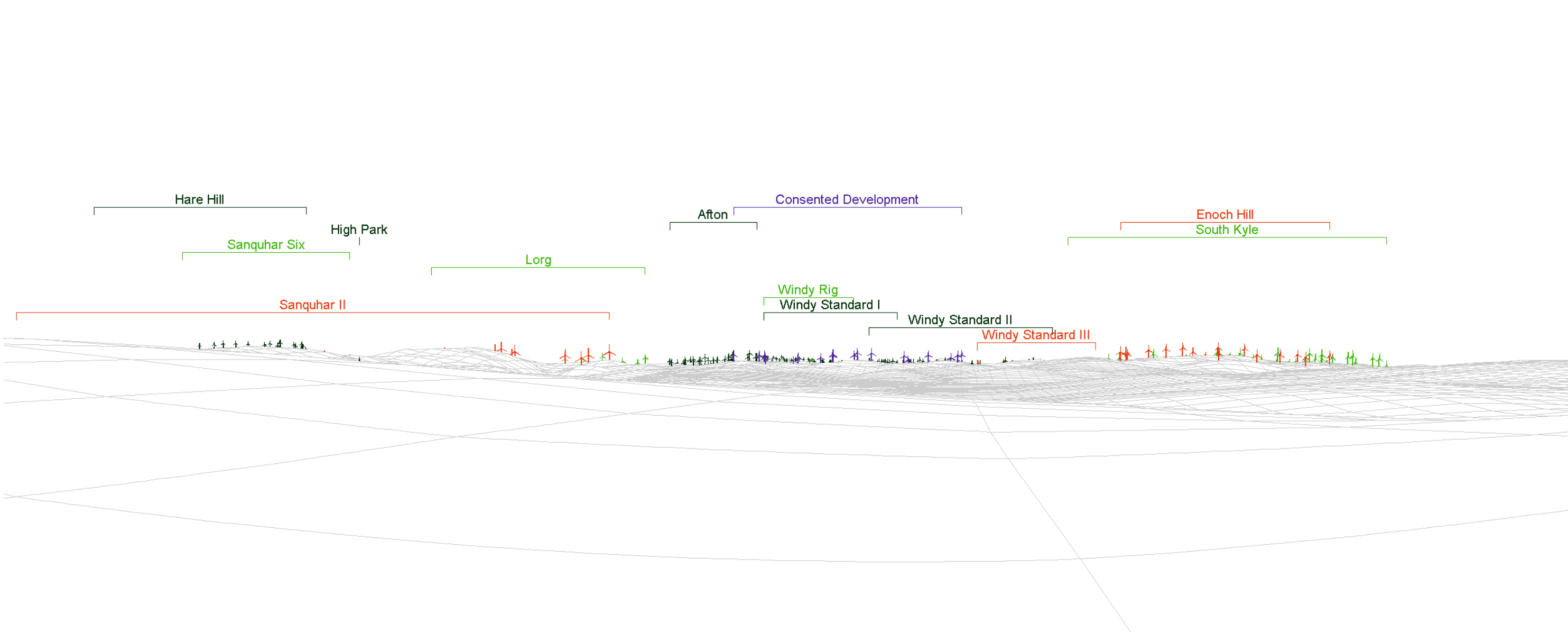
Pencloe Wind Farm Variation

Drawing Title

**Figure 7.8.8
Comparative Wireline Viewpoint 8: Layby near
Calton Farm**

Scale @ A3	1:75,000	DO NOT SCALE
Project No.	121714	

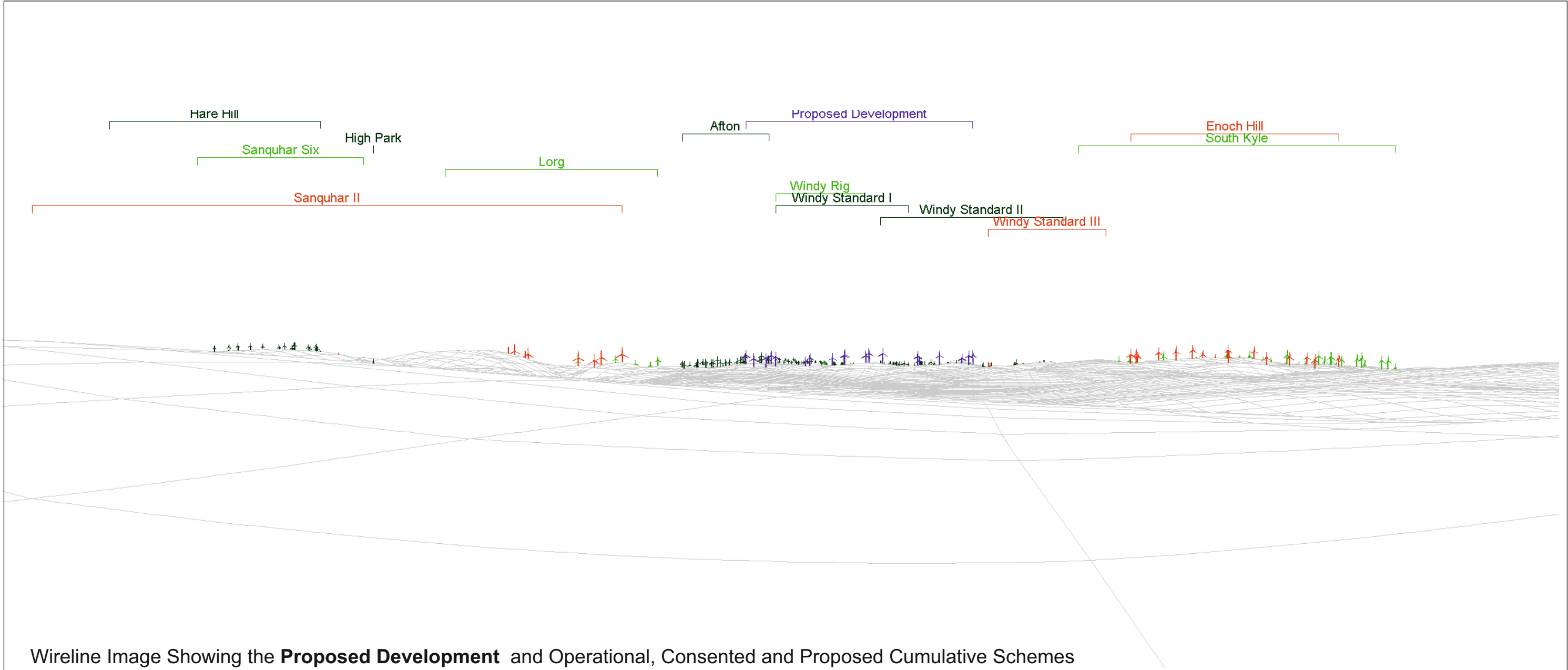
This drawing should not be relied on or used in circumstances other than those for which it was originally prepared and for which Sweco UK Limited was commissioned. Sweco UK Limited accepts no responsibility for this drawing to any party other than the person by whom it was commissioned. Any party which breaches the provisions of this disclaimer shall indemnify Sweco UK Limited for all loss or damage arising therefrom.




Wireline Image Showing **Consented Development** and Operational, Consented and Proposed Cumulative Schemes

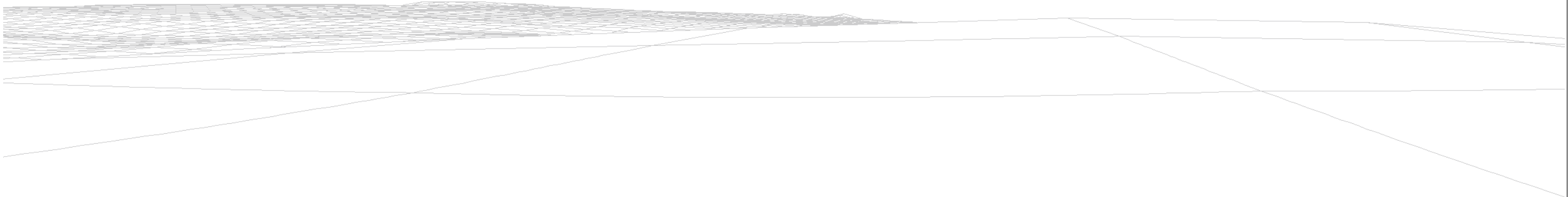
0	17/05/2019	For Issue	GM	RB
Rev.	Rev. Date	Drawing Status	Drawn	Appr'd
<div><div>SWECO</div><div>Sweco, Grove House, Mansion Gate Drive, Leeds, LS7 4DN Tel: +44 (0) 131 262 0000</div></div>				
<div>Prepared by:</div> <div><div>RAMBOLL</div><div>Ramboll UK Limited</div></div>				
<div>Client</div> <div>Pencloe Wind Energy Limited</div>				
<div>Project</div> <div>Pencloe Wind Farm Variation</div>				
<div>Drawing Title</div> <div>Figure 7.8.8ai Viewpoint 8: Layby near Calton Farm - Viewcone A</div>				
Scale @ A3			NTS	
Project No.			121714	

This drawing should not be relied on or used in circumstances other than those for which it was originally prepared and for which Sweco UK Limited was commissioned. Sweco UK Limited accepts no responsibility for this drawing to any party other than the person by whom it was commissioned. Any party which breaches the provisions of this disclaimer shall indemnify Sweco UK Limited for all loss or damage arising therefrom.



Wireline Image Showing the **Proposed Development** and Operational, Consented and Proposed Cumulative Schemes

0	17/05/2019	For Issue	GM	RB
Rev.	Rev. Date	Drawing Status	Drawn	Appr'd
<div><div><div>SWECO</div><div></div></div><div>Sweco, Grove House, Mansion Gate Drive, Leeds, LS7 4DN Tel: +44 (0) 131 262 0000</div></div>				
<div>Prepared by:</div> <div><div><div>RAMBOLL</div><div>Ramboll UK Limited</div></div></div>				
<div>Client</div> <div>Pencloe Wind Energy Limited</div>				
<div>Project</div> <div>Pencloe Wind Farm Variation</div>				
<div>Drawing Title</div> <div>Figure 7.8.8aⁱⁱ Viewpoint 8: Layby near Calton Farm - Viewcone A</div>				
Scale @ A3			NTS	
Project No.			121714	
<div>This drawing should not be relied on or used in circumstances other than those for which it was originally prepared and for which Sweco UK Limited was commissioned. Sweco UK Limited accepts no responsibility for this drawing to any party other than the person by whom it was commissioned. Any party which breaches the provisions of this disclaimer shall indemnify Sweco UK Limited for all loss or damage arising therefrom.</div>				



Wireline Image

0	17/05/2019	For Issue	GM	RB
Rev.	Rev. Date	Drawing Status	Drawn	Appr'd
<div>SWECO</div> <div>Sweco, Grove House, Mansion Gate Drive, Leeds, LS7 4DN</div> <div>Tel: +44 (0) 131 262 0000</div>				
<div>Prepared by:</div> <div>RAMBOLL</div> <div>Ramboll UK Limited</div>				
<div>Client</div> <div>Pencloe Wind Energy Limited</div>				
<div>Project</div> <div>Pencloe Wind Farm Variation</div>				
<div>Drawing Title</div> <div>Figure 7.8.8b</div> <div>Viewpoint 8: Layby near Calton Farm -</div> <div>Viewcone B</div>				
Scale @ A3	NTS			NTS
Project No.	121714			

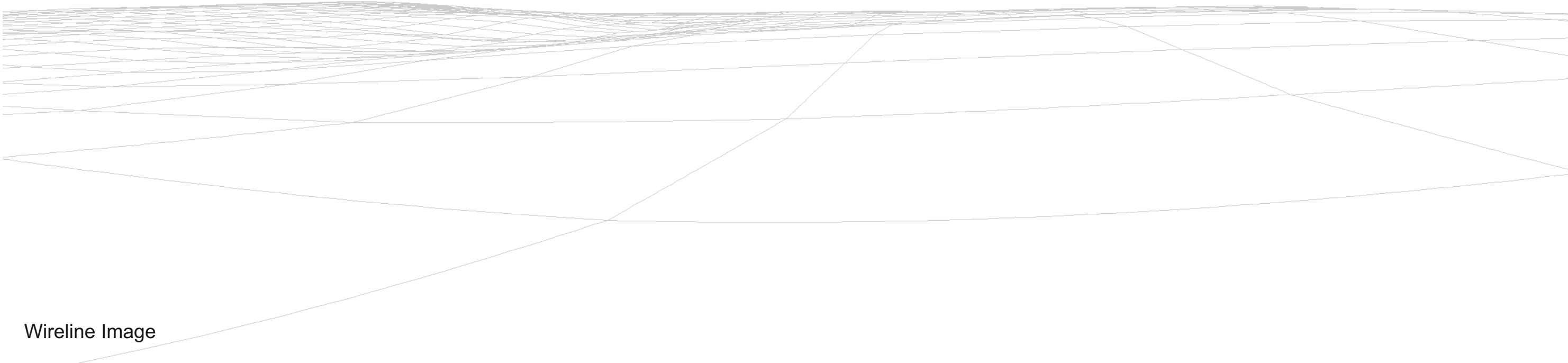
This drawing should not be relied on or used in circumstances other than those for which it was originally prepared and for which Sweco UK Limited was commissioned. Sweco UK Limited accepts no responsibility for this drawing to any party other than the person by whom it was commissioned. Any party which breaches the provisions of this disclaimer shall indemnify Sweco UK Limited for all loss or damage arising therefrom.

Whitelee Phase II


Wireline Image

0	17/05/2019	For Issue	GM	RB
Rev.	Rev. Date	Drawing Status	Drawn	Appr'd
<div>SWECO</div> <div>Sweco, Grove House, Mansion Gate Drive, Leeds, LS7 4DN Tel: +44 (0) 131 262 0000</div>				
<div>Prepared by:</div> <div>RAMBOLL</div> <div>Ramboll UK Limited</div>				
<div>Client</div> <div>Pencloe Wind Energy Limited</div>				
<div>Project</div> <div>Pencloe Wind Farm Variation</div>				
<div>Drawing Title</div> <div>Figure 7.8.8c Viewpoint 8: Layby near Calton Farm - Viewcone C</div>				
Scale @ A3	NTS			NTS
Project No.	121714			

This drawing should not be relied on or used in circumstances other than those for which it was originally prepared and for which Sweco UK Limited was commissioned. Sweco UK Limited accepts no responsibility for this drawing to any party other than the person by whom it was commissioned. Any party which breaches the provisions of this disclaimer shall indemnify Sweco UK Limited for all loss or damage arising therefrom.



Wireline Image

0	17/05/2019	For Issue	GM	RB
Rev.	Rev. Date	Drawing Status	Drawn	Appr'd
<div><div><div>SWECO</div><div></div></div><div>Sweco, Grove House, Mansion Gate Drive, Leeds, LS7 4DN Tel: +44 (0) 131 262 0000</div></div>				
Prepared by:				
<div><div><div>RAMBOLL</div><div>Ramboll UK Limited</div></div></div>				
Client				
Pencloe Wind Energy Limited				
Project				
Pencloe Wind Farm Variation				
Drawing Title				
Figure 7.8.8d Viewpoint 8: Layby near Calton Farm - Viewcone D				
Scale @ A3		NTS		NTS
Project No.		121714		
This drawing should not be relied on or used in circumstances other than those for which it was originally prepared and for which Sweco UK Limited was commissioned. Sweco UK Limited accepts no responsibility for this drawing to any party other than the person by whom it was commissioned. Any party which breaches the provisions of this disclaimer shall indemnify Sweco UK Limited for all loss or damage arising therefrom.				