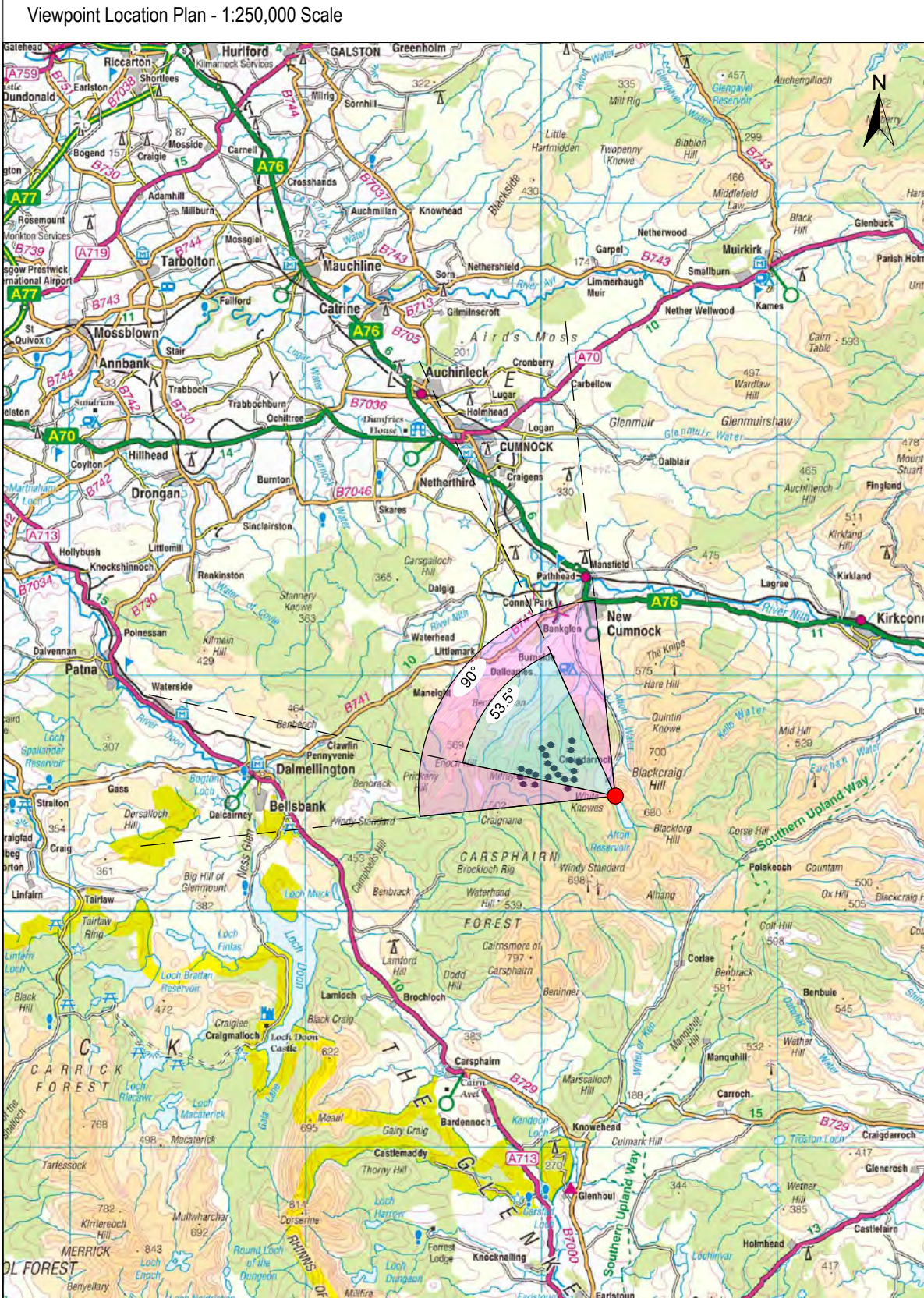


LOCATION: C:\Users\Nhope\Desktop\UEIA\Projects\UE30643\Deliverables\Drawings\Drawg with HH74-5 DIA101\UE30643-0000-NEP-DG-0026 Viewpoint 20.dwg



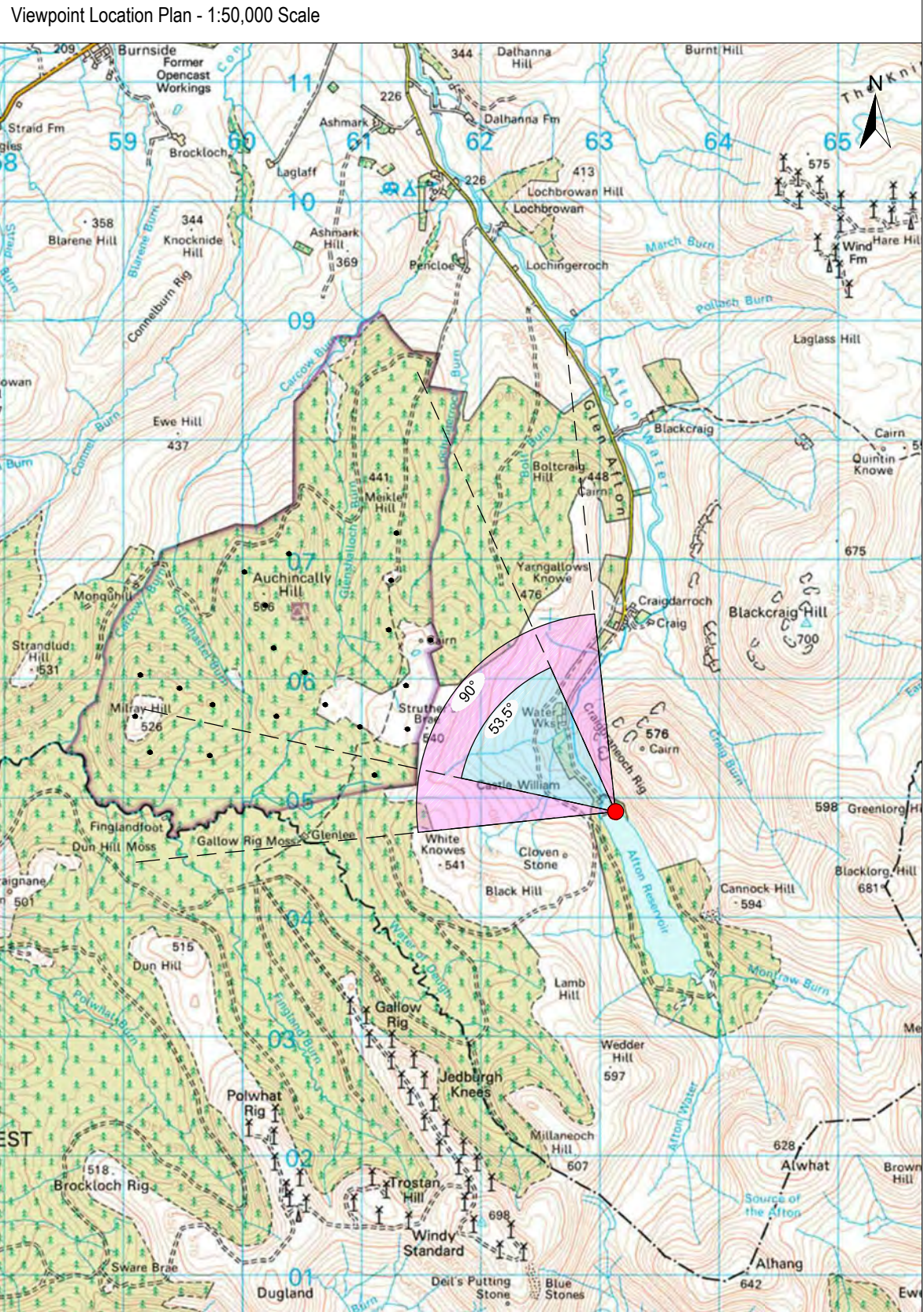
SCALE 1:250,000 @ A3

0 5 10km

OS Grid Reference: 263124, 604887  
Viewpoint Height: 414m AOD  
Bearing to Site: 309°  
Approx Distance to Nearest Turbine: 1.88km  
Camera Model: Canon 5D  
Lens: 50mm (Canon EF 50mm 1:1.4)  
Camera Height: Approx 1.5m  
Date: 20/08/2013  
Time: 11:23

VIEWPOINT DESCRIPTION

Afton Reservoir Dam



SCALE 1:50,000 @ A3

0 1 2km

KEY:

- Proposed Turbine Locations
- Viewpoint Location

KEY TO WIREFRAME FIGURES:

- Pencloe Windfarm
- Built and Consented Sites
- Sites at Planning Application Stage
- Sites at Scoping Stage

PENCLOE  
WIND ENERGY LIMITED

PENCLOE WINDFARM

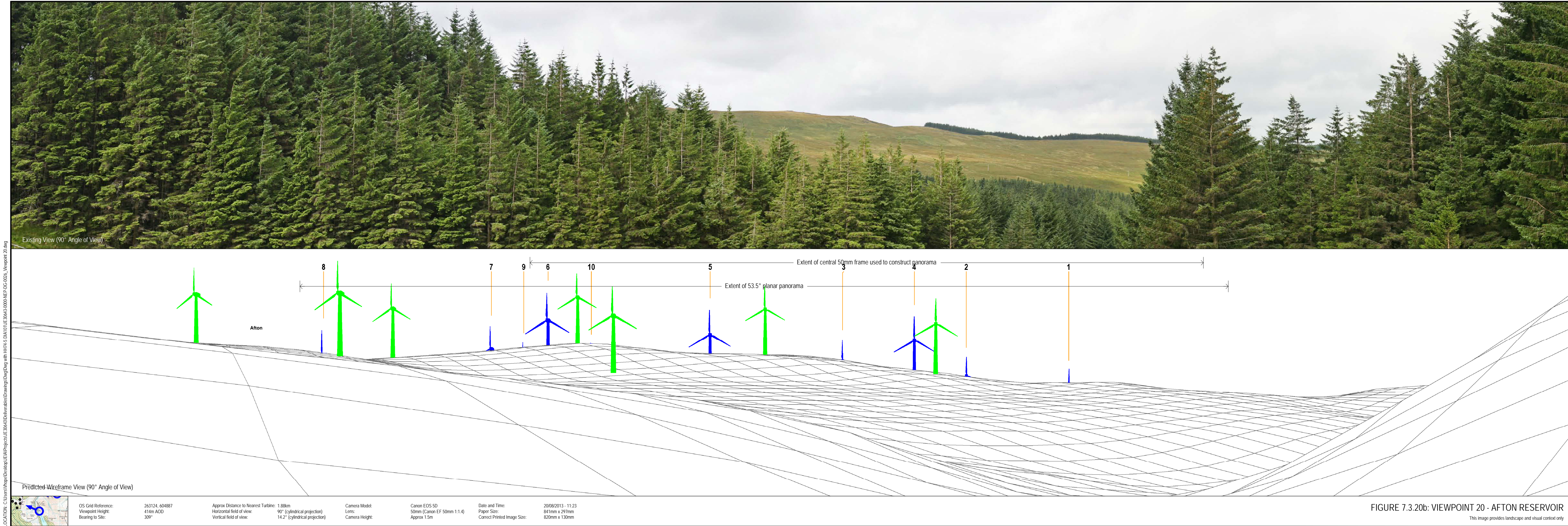
FIGURE 7.3.20a

VIEWPOINT 20:  
AFTON RESERVOIR  
VIEWPOINT LOCATION PLAN

SCALE	PROJECT NO.
As shown	JE30643
CONTENT	DRAWN
VH	VH
CHECKED	DATE
PD	FEBRUARY 2015

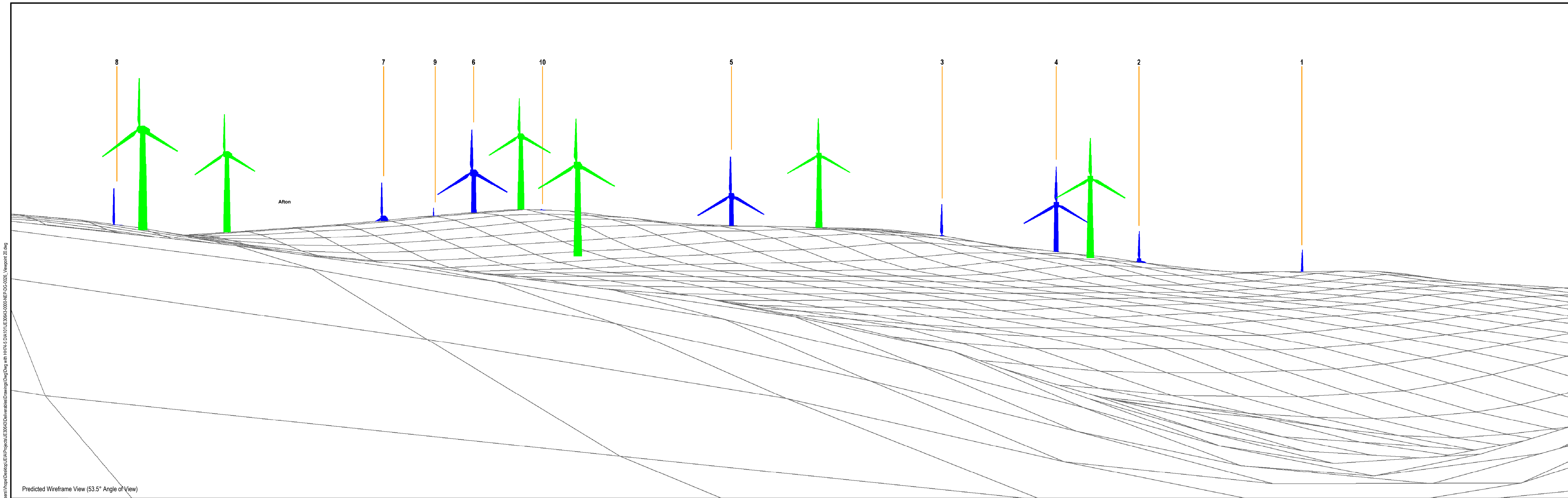
JACOBS







LOCATION: C:\Users\Nhope\Desktop\UEA\Projects\UEA\Deliverables\Drawings\DWG with HH74-5 DIA101\UE30643-0000-NEP-DG-0026 Viewpoint 20.dwg



Predicted Wireframe View (53.5° Angle of View)



OS Grid Reference:	263124, 604887	Approx Distance to Nearest Turbine:	1.88km	Camera Model:	Canon EOS 5D	Date and Time:	20/08/2013 - 11:23
Viewpoint Height:	414m AOD	Horizontal field of view:	53.5° (planar projection)	Lens:	50mm (Canon EF 50mm 1:1.4)	Paper Size:	841mm x 297mm
Bearing to Site:	309°	Vertical field of view:	18.2° (planar projection)	Camera Height:	Approx 1.5m	Correct Printed Image Size:	820mm x 260mm

FIGURE 7.3.20c: VIEWPOINT 20 - AFTON RESERVOIR  
View flat at a comfortable arms length. The principal distance is 812.5mm



LOCATION: C:\Users\Wpoe\Desktop\UEA\Projects\UE 3043\Deliverables\Drawings\Drawings\HH74-5 DIA1011UE 3043-0000-NEP-DC-0026\_Viewpoint 20.dwg



Predicted Photomontage View (53.5° Angle of View)

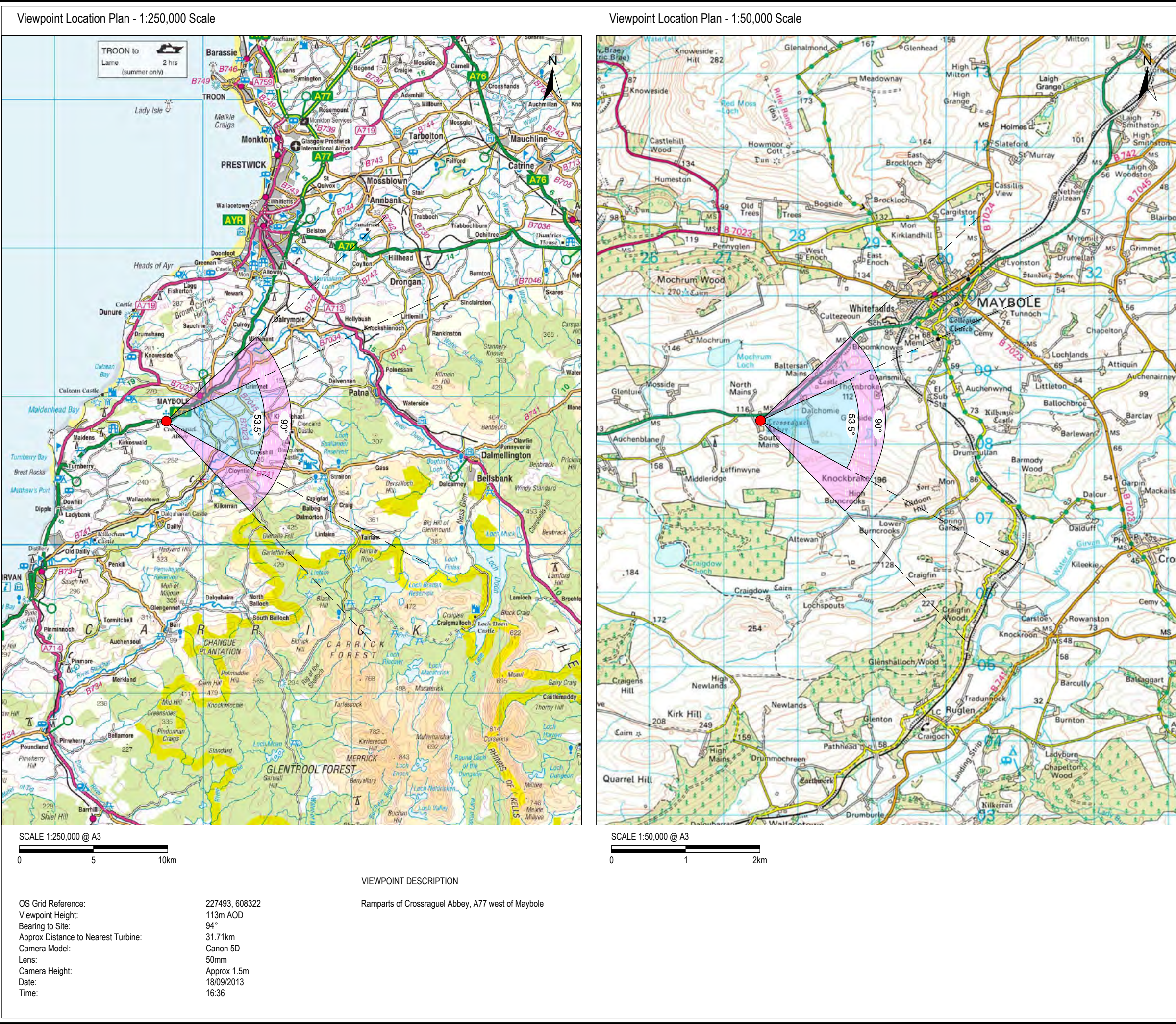


OS Grid Reference:	263124, 604887	Approx Distance to Nearest Turbine:	1.88km	Camera Model:	Canon EOS 5D	Date and Time:	20/08/2013 - 11:23
Viewpoint Height:	414m AOD	Horizontal field of view:	53.5° (planar projection)	Lens:	50mm (Canon EF 50mm 1:1.4)	Paper Size:	841mm x 297mm
Bearing to Site:	309°	Vertical field of view:	18.2° (planar projection)	Camera Height:	Approx 1.5m	Correct Printed Image Size:	820mm x 260mm

FIGURE 7.3.20d: VIEWPOINT 20 - AFTON RESERVOIR  
View flat at a comfortable arms length. The principal distance is 812.5mm



LOCATION: C:\Users\Nhope\Desktop\UEIA\Projects\UE30643\Deliverables\Drawings\DWG with HH74-5 DIA\101\UE30643-000-NEP-DG-0027\_Viewpoint 21.dwg



KEY:

Proposed Turbine Locations

Viewpoint Location

KEY TO WIREFRAME FIGURES:

Pencloe Windfarm

Built and Consented Sites

Sites at Planning Application Stage

Sites at Scoping Stage

PENCLOE WIND ENERGY LIMITED

PENCLOE WINDFARM

FIGURE 7.3.21a

VIEWPOINT 21: A77 WEST OF MAYBOLE/CROSSRAGUEL ABBEY

VIEWPOINT LOCATION PLAN

SCALEAs shown

PROJECT NO.JE30643

CONTENTVH

DRAWNVH

CHECKEDPD

DATEFEBRUARY 2015

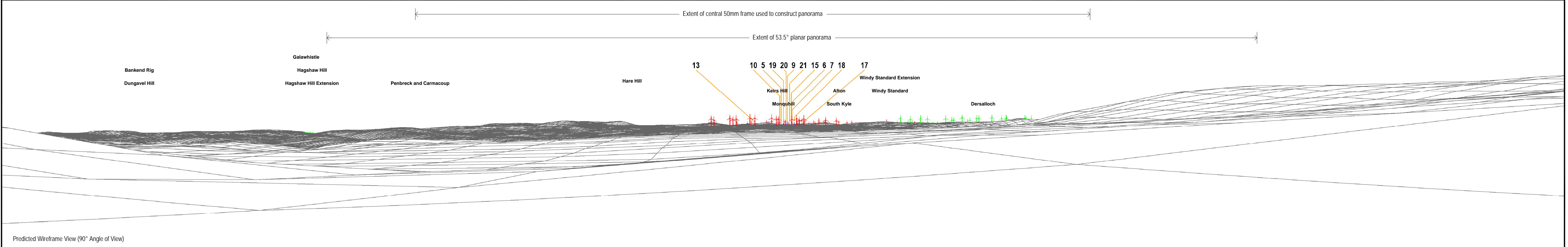
JACOBS



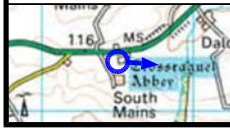
LOCATION: C:\Users\Viqpe\Desktop\UEA\Projects\UEA\Deliverables\Drawings\Drawings\HH745 DIA101UE30043-0000-NEP-DC-0027 Viewpoint 21.dwg



Existing View (90° Angle of View)



Predicted Wireframe View (90° Angle of View)

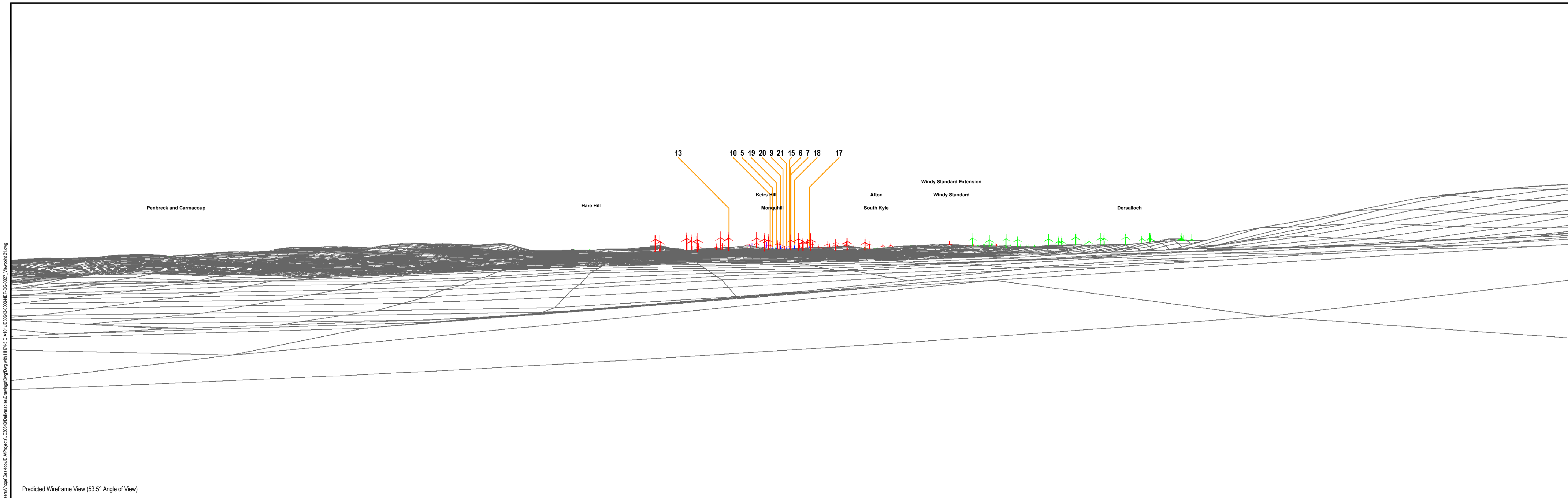


OS Grid Reference:	227493, 608322	Approx Distance to Nearest Turbine:	31.71km	Camera Model:	Canon EOS 5D	Date and Time:	18/09/2013 - 16:36
Viewpoint Height:	113m AOD	Horizontal field of view:	90° (cylindrical projection)	Lens:	50mm (Canon EF 50mm 1:1.4)	Paper Size:	841mm x 297mm
Bearing to Site:	94°	Vertical field of view:	14.2° (cylindrical projection)	Camera Height:	Approx 1.5m	Correct Printed Image Size:	820mm x 130mm

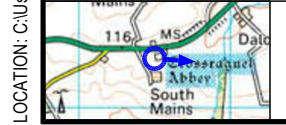
FIGURE 7.3.21b: VIEWPOINT 21 - A77 WEST OF MAYBOLE/CROSSRAGUEL ABBEY  
This image provides landscape and visual context only



LOCATION: C:\Users\Nigel\Desktop\UEA\Projects\UEA\Deliverables\Drawings\Drawings\HH74-5 DIA101\UE30643-000-NEP-DG-0027 Viewpoint 21.dwg



Predicted Wireframe View (53.5° Angle of View)

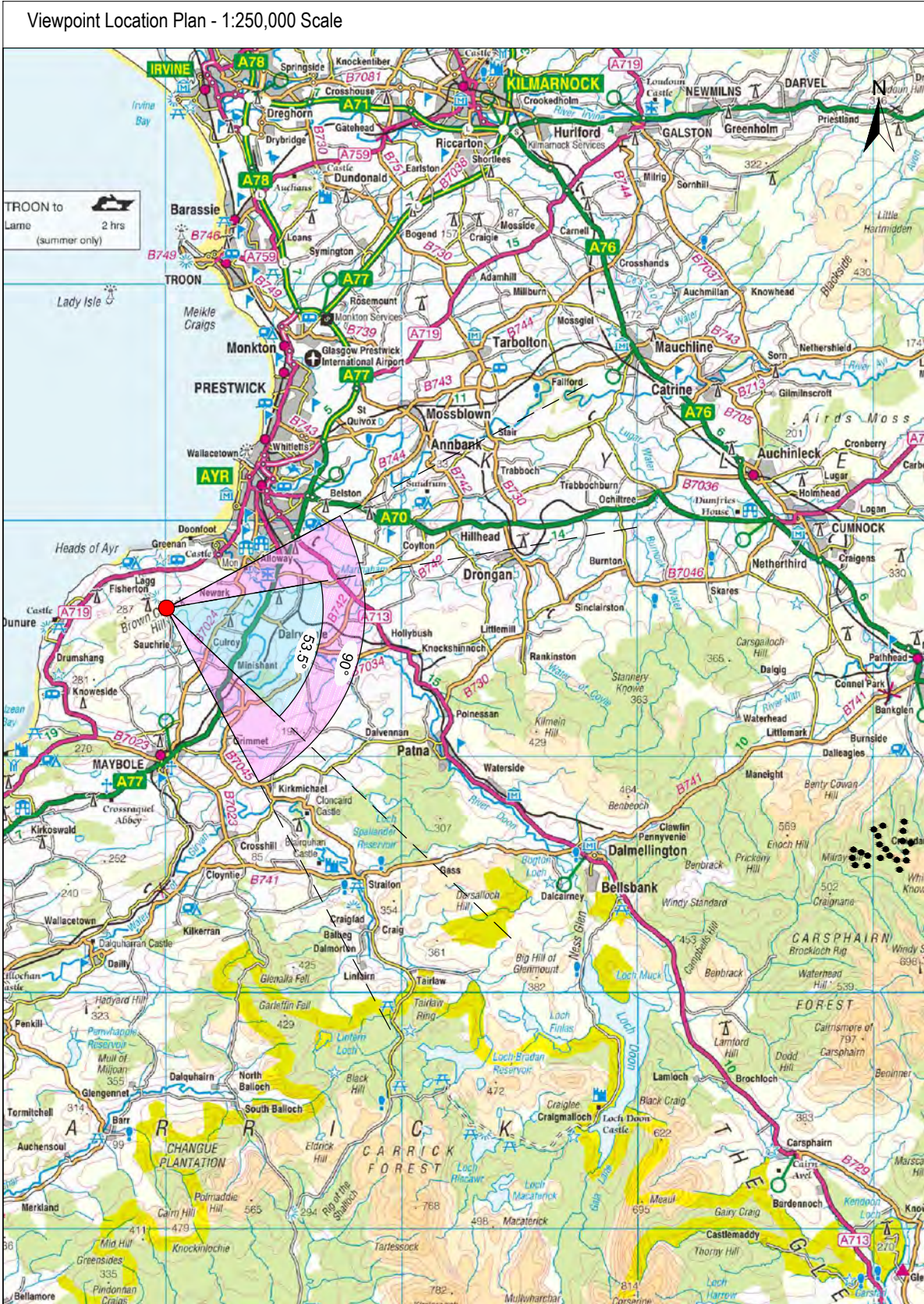


OS Grid Reference:	227493, 608322	Approx Distance to Nearest Turbine:	31.71km	Camera Model:	Canon EOS 5D	Date and Time:	18/09/2013 - 16:36
Viewpoint Height:	113m AOD	Horizontal field of view:	53.5° (planar projection)	Lens:	50mm (Canon EF 50mm 1:1.4)	Paper Size:	841mm x 297mm
Bearing to Site:	94°	Vertical field of view:	18.2° (planar projection)	Camera Height:	Approx 1.5m	Correct Printed Image Size:	820mm x 260mm

FIGURE 7.3.21c: VIEWPOINT 21 - A77 WEST OF MAYBOLE/CROSSRAGUEL ABBEY  
View flat at a comfortable arms length. The principal distance is 812.5mm



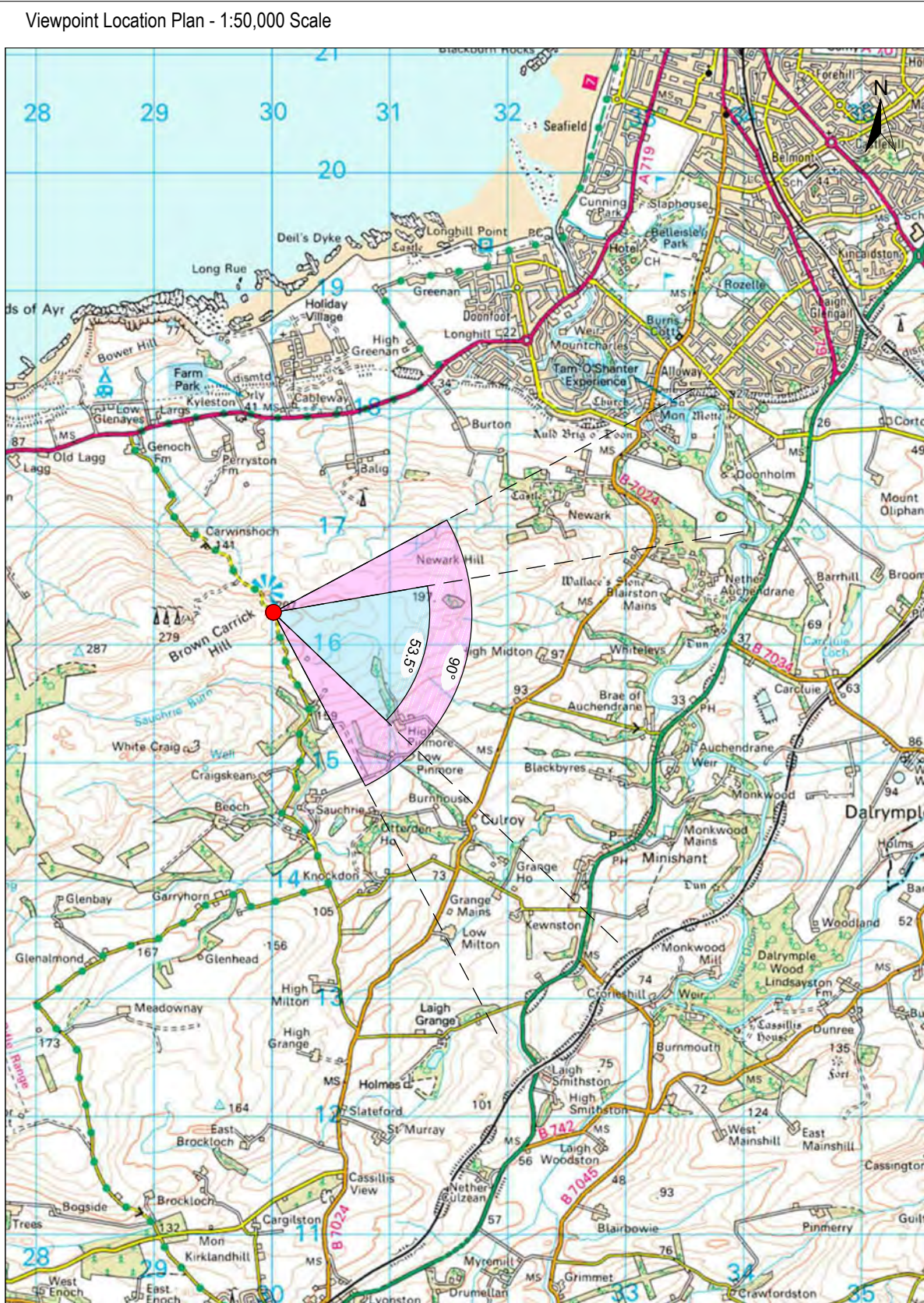
LOCATION: C:\Users\Nhope\Desktop\UEIA\Projects\UE30643\Deliverables\Drawings\DWG with HH74-5 DIA\101\UE30643-000-NEP-DG-0028 Viewpoint 22.dwg



SCALE 1:250,000 @ A3	
0 5 10km	
OS Grid Reference:	230007, 616279
Viewpoint Height:	206m AOD
Bearing to Site:	107°
Approx Distance to Nearest Turbine:	30.88km
Camera Model:	Canon 5D
Lens:	50mm
Camera Height:	Approx 1.5m
Date:	18/09/2013
Time:	17:16

VIEWPOINT DESCRIPTION

Minor road to the east of Brown Carrick Hill



SCALE 1:50,000 @ A3	
0 1 2km	

KEY:

- Proposed Turbine Locations
- Viewpoint Location

KEY TO WIREFRAME FIGURES:

- Pencloe Windfarm
- Built and Consented Sites
- Sites at Planning Application Stage
- Sites at Scoping Stage

**PENCLOE WIND ENERGY LIMITED**

**PENCLOE WINDFARM**

**FIGURE 7.3.22a**

**VIEWPOINT 22:  
BROWN CARRICK HILL  
VIEWPOINT LOCATION PLAN**

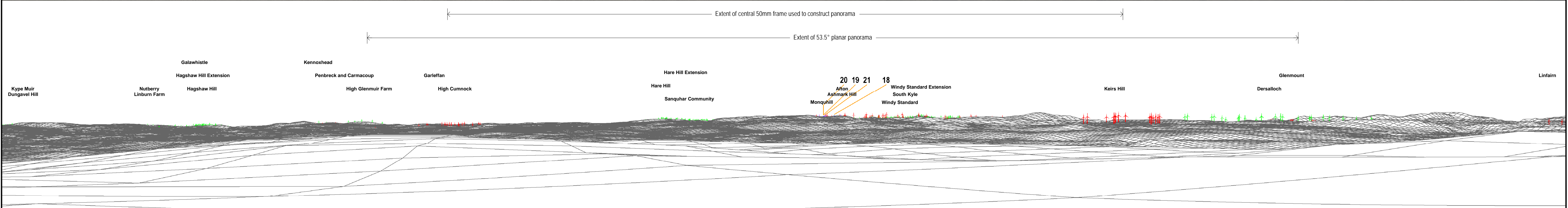
SCALE	As shown	PROJECT NO.	JE30643
CONTENT	VH	DRAWN	VH
CHECKED	PD	DATE	FEBRUARY 2015

**JACOBS**





Existing View (90° Angle of View)



Predicted Wireframe View (90° Angle of View)



OS Grid Reference:	230007, 616279	Approx Distance to Nearest Turbine:	30.88km	Camera Model:	Canon EOS 5D	Date and Time:	18/09/2013 - 17:16
Viewpoint Height:	206m AOD	Horizontal field of view:	90° (cylindrical projection)	Lens:	50mm (Canon EF 50mm 1:1.4)	Paper Size:	841mm x 297mm
Bearing to Site:	107°	Vertical field of view:	14.2° (cylindrical projection)	Camera Height:	Approx 1.5m	Correct Printed Image Size:	820mm x 130mm

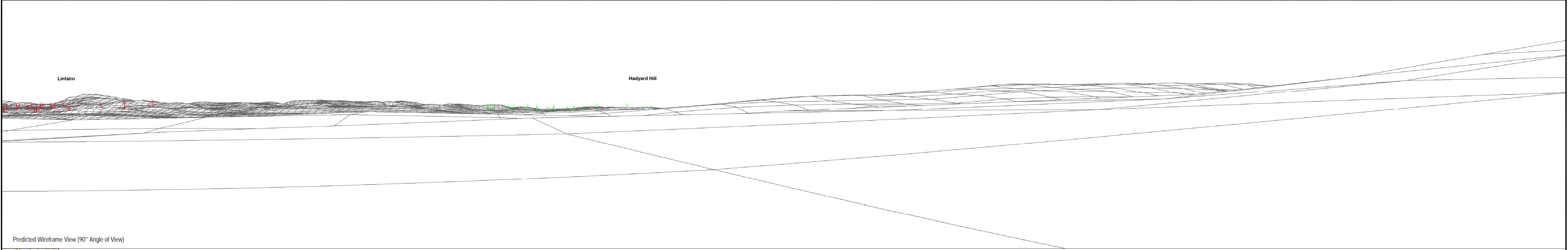
FIGURE 7.3.22bi: VIEWPOINT 22 - BROWN CARRICK HILL

This image provides landscape and visual context only





Existing View (90° Angle of View)



Predicted Wireframe View (90° Angle of View)


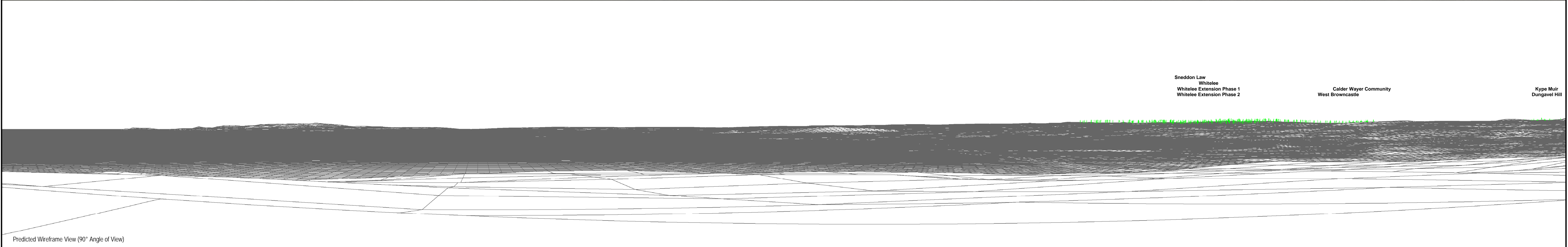
	OS Grid Reference:	230007, 616279	Approx Distance to Nearest Turbine:	30.88km	Camera Model:	Canon EOS 5D	Date and Time:	18/09/2013 - 17:16
	Viewpoint Height:	206m AOD	Horizontal field of view:	90° (cylindrical projection)	Lens:	50mm (Canon EF 50mm 1:1.4)	Paper Size:	841mm x 297mm
	Bearing to Site:	107°	Vertical field of view:	14.2° (cylindrical projection)	Camera Height:	Approx 1.5m	Correct Printed Image Size:	820mm x 130mm

FIGURE 7.3.22bii: VIEWPOINT 22 - BROWN CARRICK HILL (VIEW TO RIGHT)  
This image provides landscape and visual context only





Sneddon Law  
Whitelee  
Whitelee Extension Phase 1  
Whitelee Extension Phase 2

Calder Wayer Community  
West Browncastle

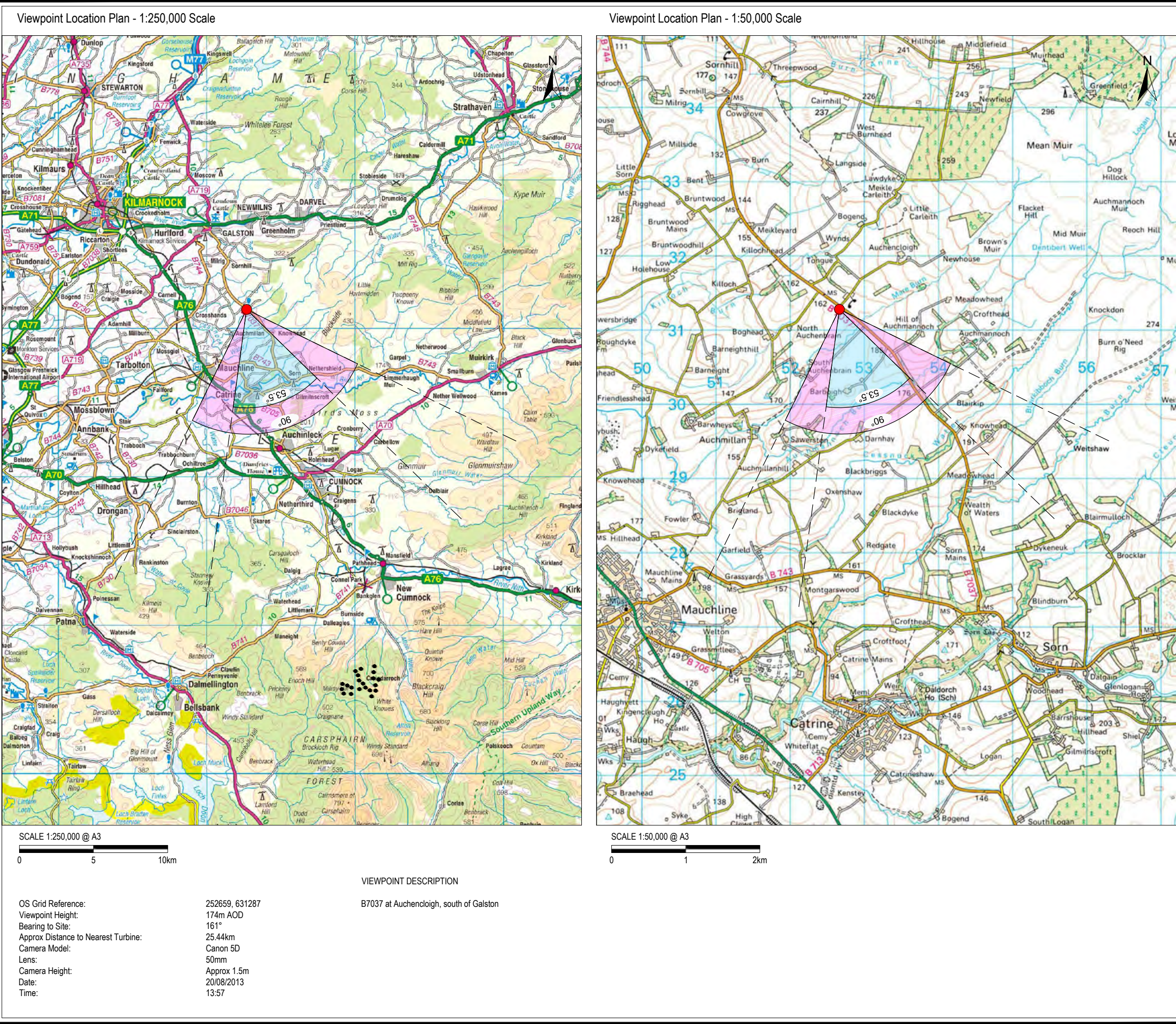
Kype Muir  
Dungavel Hill







LOCATION: C:\Users\Nhope\Desktop\UEIA\Projects\UE30643\Drawings\Drawings\DWG with HH74-5 DIA101\UE30643-0000-NEP-DG-0029 Viewpoint 23.dwg



KEY:

Proposed Turbine Locations

Viewpoint Location

KEY TO WIREFRAME FIGURES:

Pencloe Windfarm

Built and Consented Sites

Sites at Planning Application Stage

Sites at Scoping Stage

PENCLOE  
WIND ENERGY LIMITED

PENCLOE WINDFARM

FIGURE 7.3.23a

VIEWPOINT 23:  
B7037 SOUTH OF GALSTON  
VIEWPOINT LOCATION PLAN

SCALE

As shown

PROJECT NO.

JE30643

CONTENT

VH

DRAWN

VH

CHECKED

PD

DATE

FEBRUARY 2015

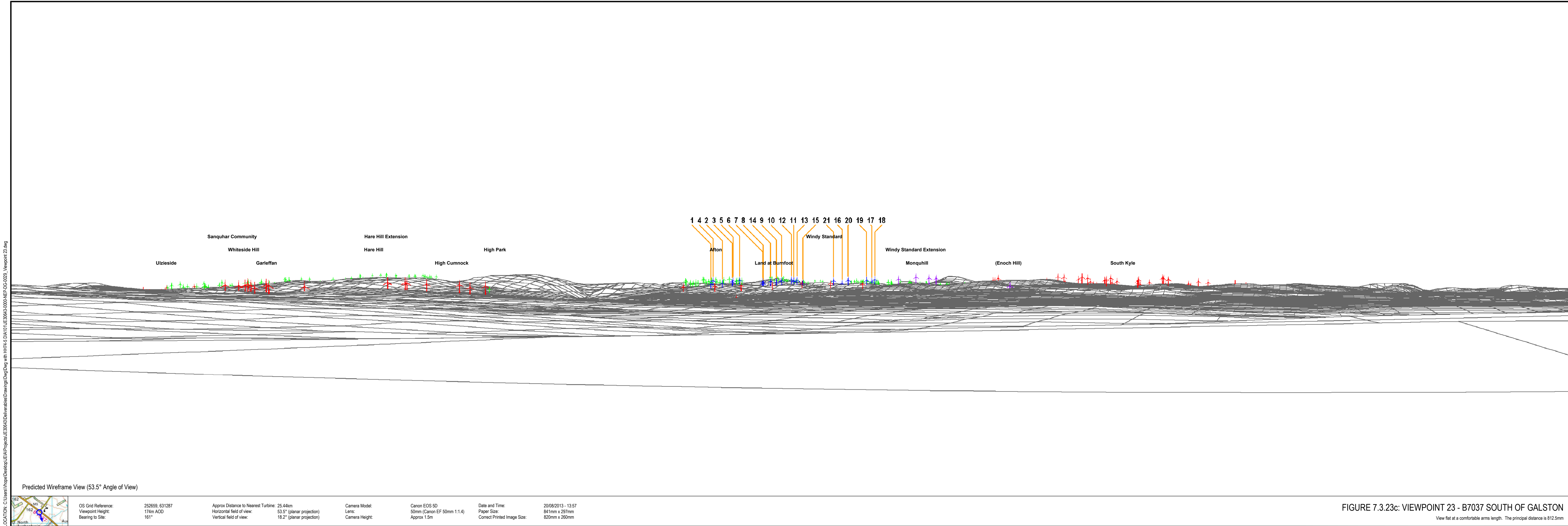
JACOBS







LOCATION: C:\Users\Niraj\Desktop\UEA\Projects\UEA\Deliverables\Drawings\Drawings\HH74-5 DIA101\UE30643-000-NEP-DG-0029\_Viewpoint 23.dwg



Predicted Wireframe View (53.5° Angle of View)

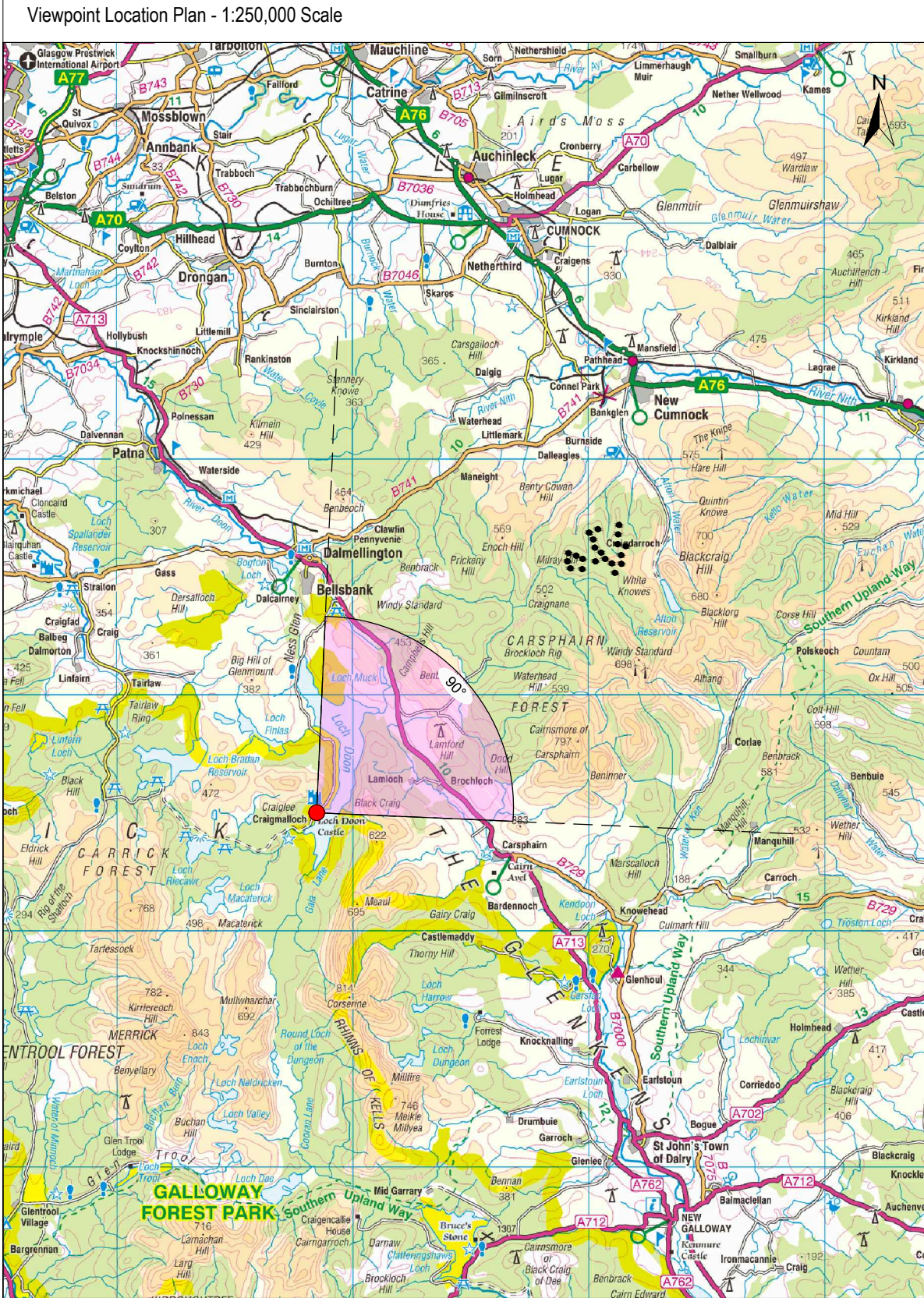


OS Grid Reference:	252659, 631287	Approx Distance to Nearest Turbine:	25.44km	Camera Model:	Canon EOS 5D	Date and Time:	20/08/2013 - 13:57
Viewpoint Height:	174m AOD	Horizontal field of view:	53.5° (planar projection)	Lens:	50mm (Canon EF 50mm 1:1.4)	Paper Size:	841mm x 297mm
Bearing to Site:	161°	Vertical field of view:	18.2° (planar projection)	Camera Height:	Approx 1.5m	Correct Printed Image Size:	820mm x 260mm

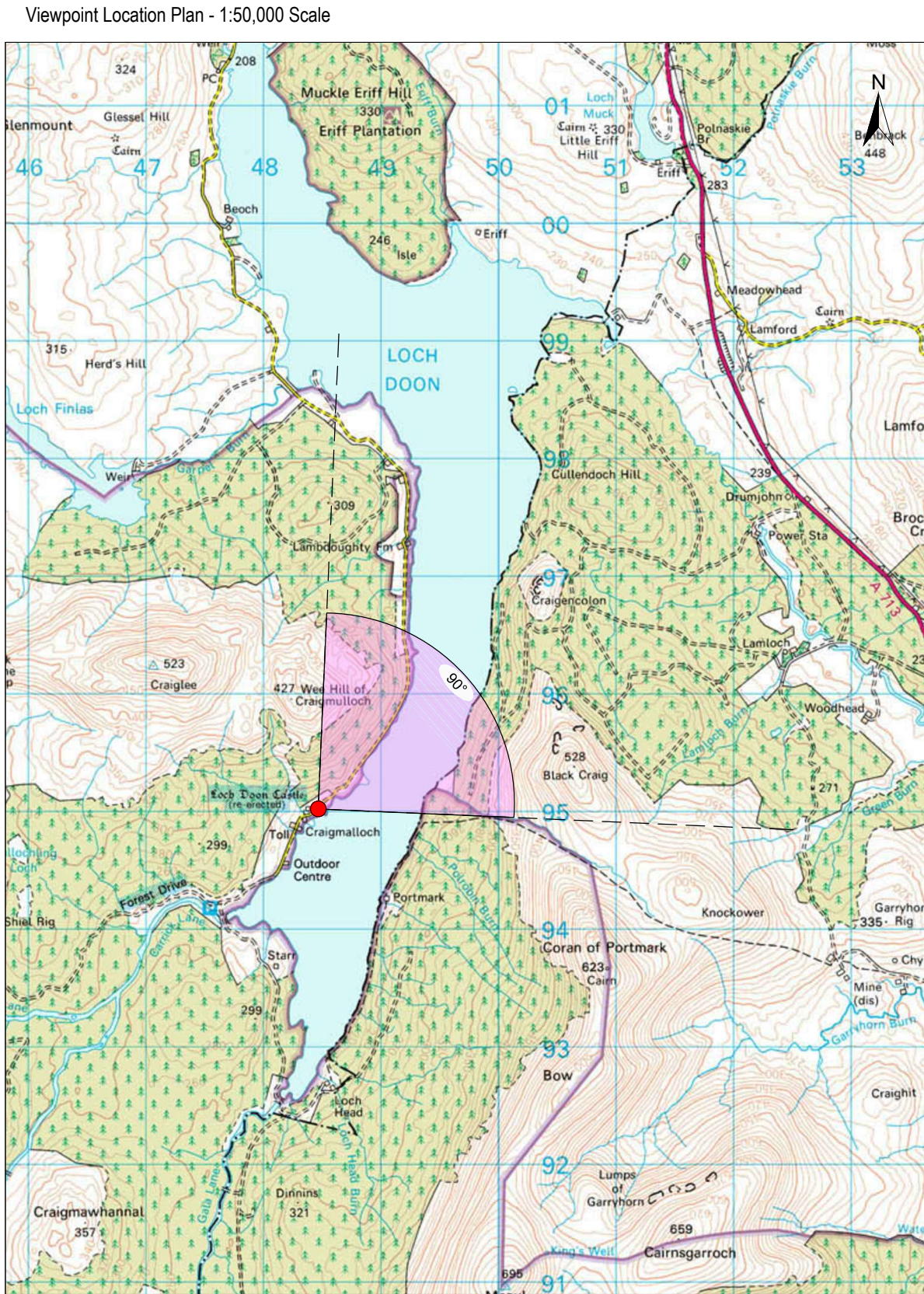
FIGURE 7.3.23c: VIEWPOINT 23 - B7037 SOUTH OF GALSTON  
View flat at a comfortable arms length. The principal distance is 812.5mm



LOCATION: C:\Users\Nhope\Desktop\UEIA\Projects\UE30643\Deliverables\Drawings\DWG with HH74-5 DIA101\UE30643-000-NEP-DG-0030\_Viewpoint 24.dwg



SCALE 1:250,000 @ A3	
VIEWING DESCRIPTION	
Doon Castle beside Loch Doon	
OS Grid Reference:	248445, 595025
Viewpoint Height:	217m AOD
Bearing to Site:	47°
Approx Distance to Nearest Turbine:	14.94km



SCALE 1:50,000 @ A3	

- KEY:
- Proposed Turbine Locations
  - Viewpoint Location
- KEY TO WIREFRAME FIGURES:
- Pencloe Windfarm
  - Built and Consented Sites
  - Sites at Planning Application Stage
  - Sites at Scoping Stage

PENCLOE  
WIND ENERGY LIMITED

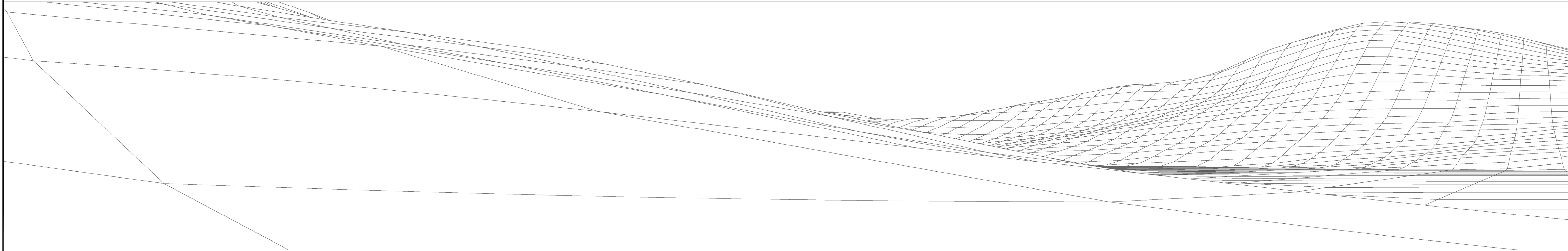
PENCLOE WINDFARM

FIGURE 7.3.24a  
VIEWPOINT 24:  
DOON CASTLE BESIDE LOCH DOON  
VIEWPOINT LOCATION PLAN (NO VISIBILITY)

SCALE		PROJECT NO.	
As shown		JE30643	
CONTENT		DRAWN	
VH		VH	
CHECKED		DATE	
PD		FEBRUARY 2015	



LOCATION: C:\Users\Viopa\Desktop\UEA\Projects\UEA\Projects\UE30643\Deliverables\Drawings\Drawings\HH74-5 DIA101\UE30643-0000-NEP-DG-0000\_Viewpoint 24.dwg



Predicted Wireframe View (90° Angle of View)



OS Grid Reference:	248445, 595025	Approx Distance to Nearest Turbine:	14.94km	Camera Model:	N/A	Date and Time:	N/A
Viewpoint Height:	217m AOD	Horizontal field of view:	90° (cylindrical projection)	Lens:	N/A	Paper Size:	841mm x 297mm
Bearing to Site:	47°	Vertical field of view:	14.2° (cylindrical projection)	Camera Height:	Approx 1.5m	Correct Printed Image Size:	820mm x 130mm

FIGURE 7.3.24b: VIEWPOINT 24 - DOON CASTLE BESIDE LOCH DOON (NO VISIBILITY)  
This image provides landscape and visual context only